



INDOFINE Chemical Company, Inc.

121 Stryker Lane, Bldg. 30, Suite 1 • Hillsborough, NJ 08844 • U.S.A.

Phone: (908) 359-6778 • FAX: (908) 359-1179

website: www.indofinechemical.com

e-mail: chemical@indofinechemical.com

CERTIFICATE OF ANALYSIS

Cat No.: M-016

Product: 7-METHOXYFLAVONE

Cas Number: [22395-22-8]

Lot Number: 1008059

Chemical Formula: C₁₆H₁₂O₃

Molecular Weight: 252.27

Melting Point 110-112°C

Solubility: Soluble in 1% acetone

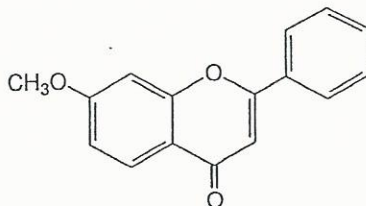
Appearance: White powder

Storage: Cool dry place

TLC: Hexane:Ethylacetate (8:2) single compound

Moisture (KF): 0.35%

Assay (HPLC): 99.61%





INDOFINE Chemical Company, Inc.

121 Stryker Lane, Bldg. 30, Suite 1 • Hillsborough, NJ 08844 • U.S.A.

Phone: (908) 359-6778 • FAX: (908) 359-1179

website: www.indofinechemical.com

e-mail: chemical@indofinechemical.com

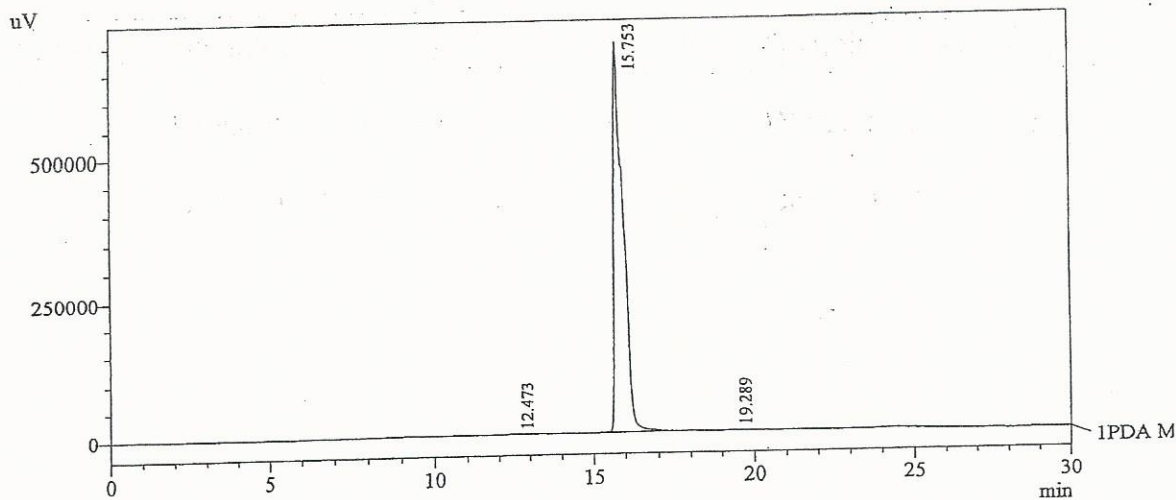
HPLC ANALYSIS

Acquired by	: Madhuri	Cat. No.:	M-016
Sample Name	: 7-Methoxy Flavone	Product:	7-Methoxyflavone
Sample ID	: 60 kg Lot	Lot No.:	1008059
Injection Volume	: 20 uL		
Data Filename	: 2807101.lcd		
Method Filename	: Linear Gradient.M.lcm		

Description:

Column	: Inertsil C-18, 250X4.6mm 5.0µm
Flow	: 1.00mL/min.
Mobile Phase	: A(Water 0.05% TFA) : B(ACN)
	00.01 : 90 : 10
	12.00 : 10 : 90
	20.00 : 10 : 90
	23.00 : 90 : 10

Chromatogram
7-Methoxy Flavone D:\promoncence



1 PDA Multi 1 / 240nm 4nm

PeakTable

PDA Ch1 240nm 4nm

Peak#	Ret. Time	Area	Height	Area %
1	12.473	39415	952	0.283
2	15.753	13890957	695181	99.613
3	19.289	14524	705	0.104
Total		13944896	696838	100.000



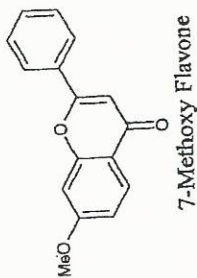
INDOFINE Chemical Company, Inc.

121 Stryker Lane, Bldg. 30, Suite 1 • Hillsborough, NJ 08844 • U.S.A.

Phone: (908) 359-6778 • FAX: (908) 359-1179

website: www.indofinechemical.com

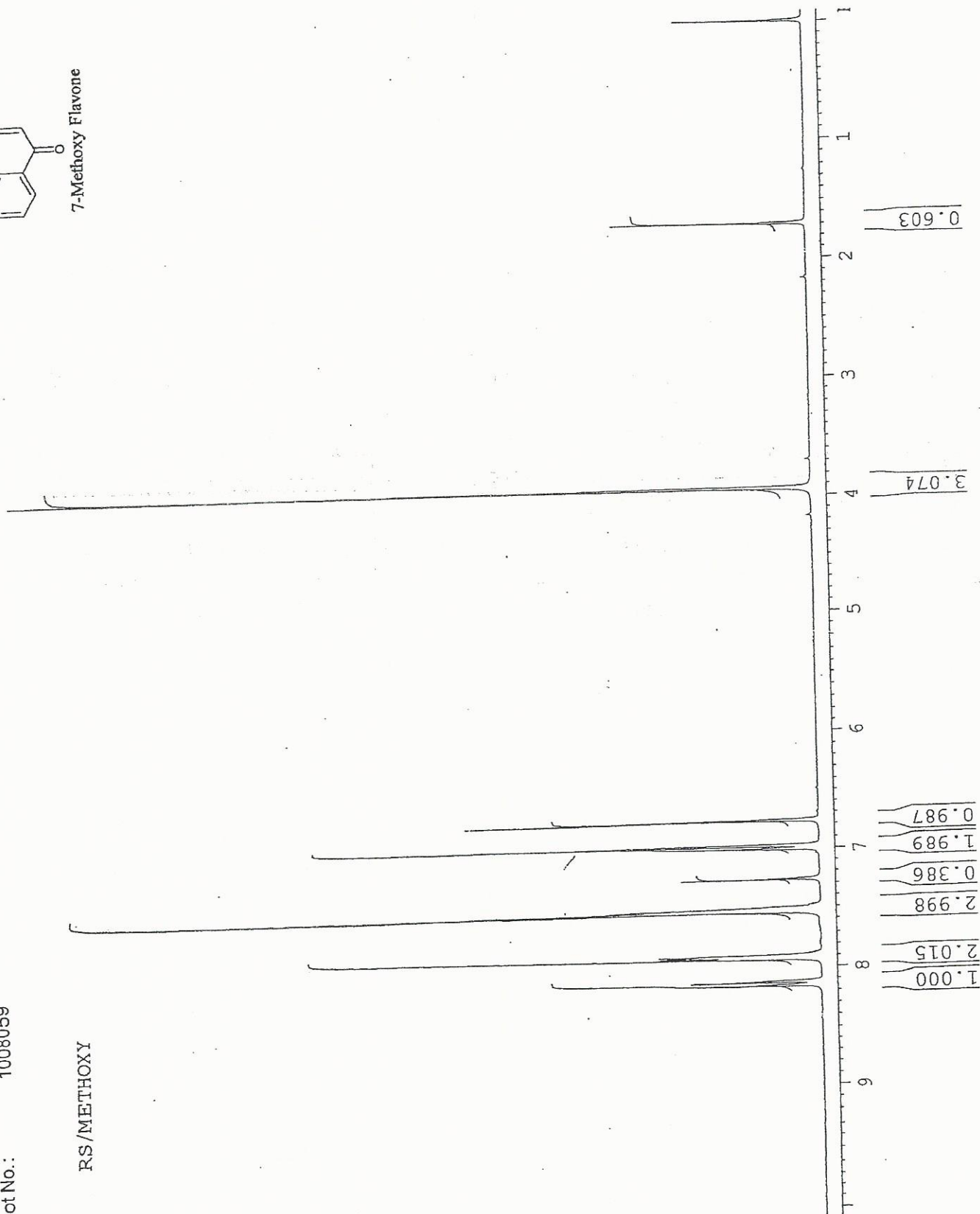
e-mail: chemical@indofinechemical.com



M-016
7-Methoxyflavone
1008059

Cat. No.:
Product:
Lot No.:

RS/METHOXY





INDOFINE Chemical Company, Inc.

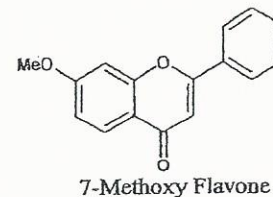
121 Stryker Lane, Bldg. 30, Suite 1 • Hillsborough, NJ 08844 • U.S.A.

Phone: (908) 359-6778 • FAX: (908) 359-1179

website: www.indofinechemical.com

e-mail: chemical@indofinechemical.com

Cat. No.: M-016
Product: 7-Methoxyflavone
Lot No.: 1008059



TEST RESULTS

TEST	SPECIFICATION	RESULTS
Total plate count	Not more than 1000cfu/gm	32cfu/gm
Yeast & moulds	Not more than 100cfu/gm	NIL
Test for specified organisms:		
Ecoli	Should be negative	Negative
Salmonellae	Should be negative	Negative
Heavy metals	Not more than 5ppm	Less than 5ppm
Lead	Not more than 0.1ppm	BDL
Residual solvents by GC:		
Methanol		271ppm
Acetone		BDL
IPA		BDL
Methylene chloride		BDL
n-hexane		BDL
IPE		116ppm
Pyridine		BDL

The sample is having the above characteristics

*Spectrum enclosed BDL=below detectable limits